



Seed  
GLOBAL HEALTH



# ED Care and Disposition Plan for a Deteriorating Patient

Dr. Cornelius S., Doreen A.O., Anna I.K., Rebecca  
A., Joseph B. L., Joseph S., Andrew O..

# Session Objectives

## CRM Objectives

- ED station preparation
- Teamwork & closed-loop communication during resuscitation
- SAMPLE history taking
- Multidisciplinary team engagement

## Medical Objectives

- ABCDE approach in management of TBI
- MIL during intubation
- Nursing care of a critically ill patient in the ED
- Management of raised ICP in severe TBI



Seed  
GLOBAL HEALTH



# Patient Case

Mukasa John is a 30-year-old male involved in a high-speed motorcycle crash along Masaka highway, referred from Masaka RRH to Mulago NSH with diagnosis of polytrauma and severe TBI for Brain CT scan and Neurosurgical management. While in transit, he convulsed and his GCS reduced. The EMT handed over the patient to the ED team for further care



Seed  
GLOBAL HEALTH



# Essential skills

## Overall



- Assessing ABCDE
- Trauma Secondary Survey
- Cervical spine immobilization
- Head-tilt and chin-lift/jaw thrust
- Airway suctioning
- Management of choking
- Recovery position
- Nasopharyngeal (NPA) and oropharyngeal airway (OPA) placement



- Oxygen administration
- Bag-valve-mask ventilation
- Needle-decompression for tension pneumothorax
- Three-sided dressing for chest wound



- Intravenous (IV) line placement
- IV fluid resuscitation
- Direct pressure/ deep wound packing for haemorrhage control
- Tourniquet for haemorrhage control
- Pelvic binding
- Fracture immobilization
- Skin pinch test



- Full spine immobilization
- AVPU, GCS assessment
- Glucose administration



- Wound and burn management
- Snake bite management
- Log roll



# POCUS



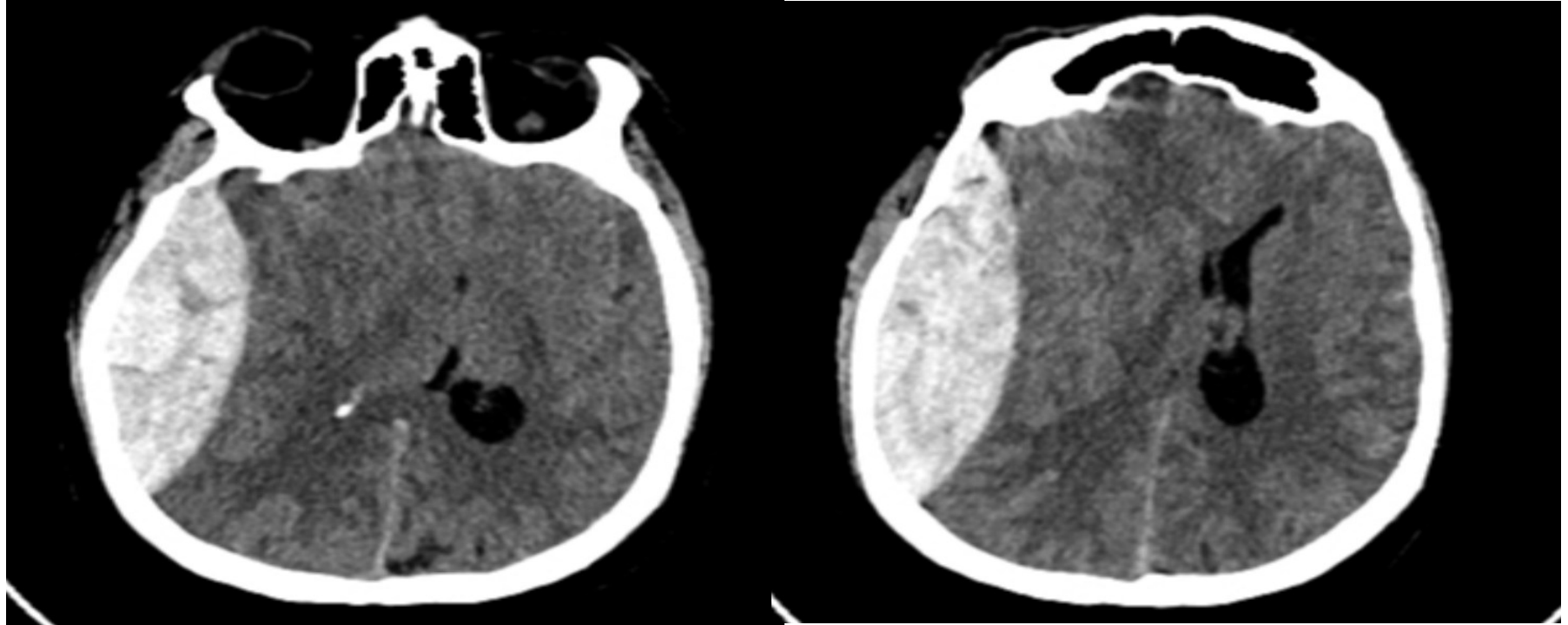
Seed  
GLOBAL HEALTH



# MILS for stabilization

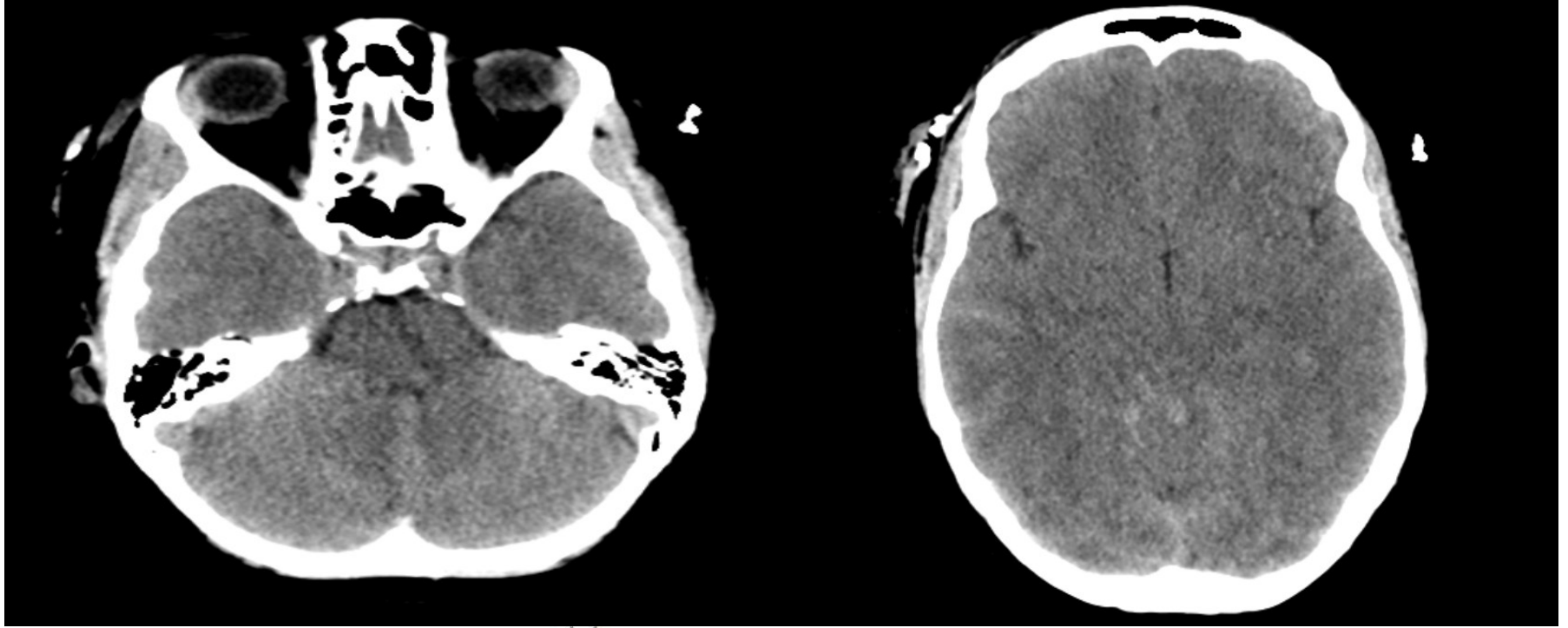


# Brain CT scan





# Brain CT Scan





Thank you